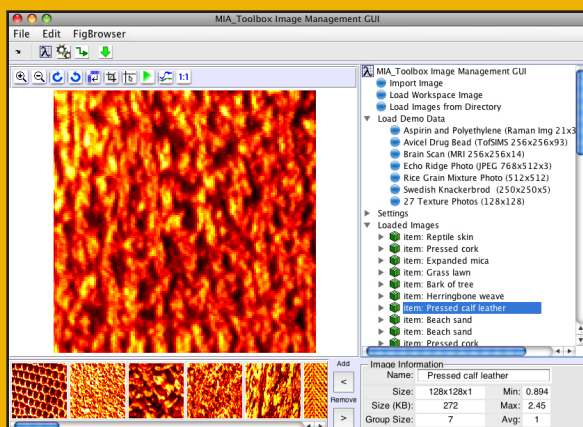
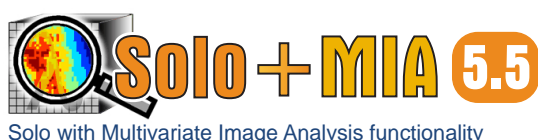
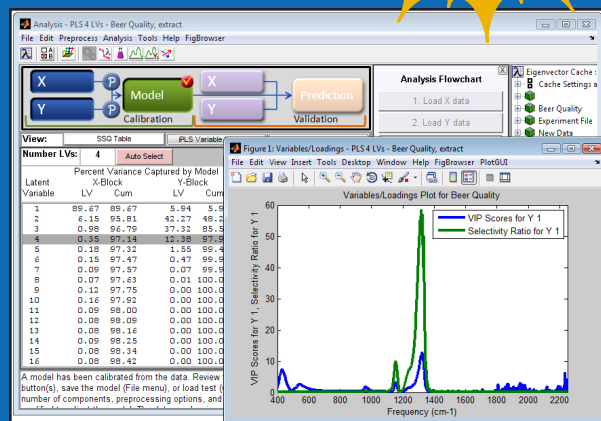


# The Best Chemometrics Software Just Keeps Getting Better



**AVAILABLE  
OCTOBER  
2009!**

- New Direct Scores PLS (DSPLS) algorithm (faster and more accurate)
- Automatic bias and slope correction for regression models
- Improved automatic component selection in PCA
- Additional help and warnings prevent poor modeling choices
- Selectivity ratio statistic for variable selection (pictured)
- New file import and export options (Hamilton Sundstrand, Horiba JY, Analect)
- New GUI for Correlation Spectroscopy



- New primary interface for organizing, editing, and viewing images (pictured)
- New Texture analysis interface
- New spatial image filters
- Edge detection, image erosion and morphing tools
- Opotek TIFF and Lispix RAW file importers
- Improved memory and speed performance (also available for 64-bit systems)

## EVRIware for EVRIsolution: Powerful Resources for Intelligent Data Analysis



Eigenvector Research, Inc.  
3905 West Eaglerock Drive  
Wenatchee, WA 98801

Phone 509.662.9213  
Fax 509.662.9214  
sales@eigenvector.com